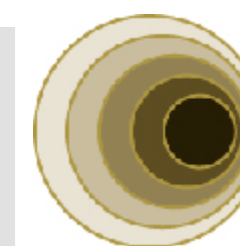
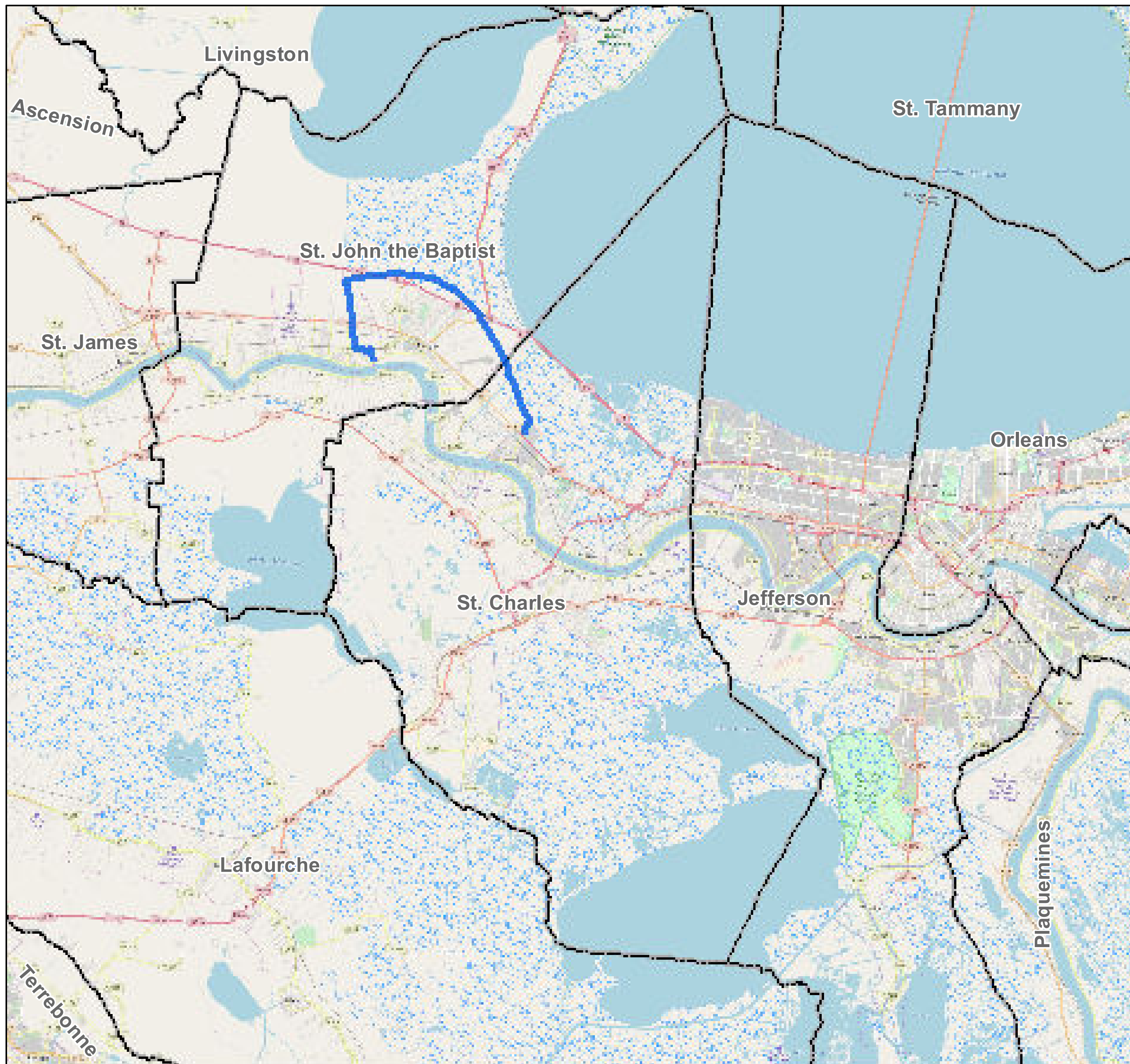
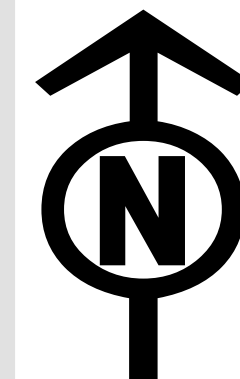


County: St. Charles, Louisiana







BUCKEYE PARTNERS, L.P.



For more detailed pipeline information see the NPMS public viewer at: www.npms.phmsa.dot.gov

1 in = 3.34 miles

Legend

-  Buckeye Pipelines (1)
-  Buckeye Facilities (0)
-  State Boundaries
-  County Boundaries



This map is not intended to be used to physically locate Buckeye's facilities. Facilities and other features are not to scale. Before conducting any excavation activities, you must first call your state One Call System to have all underground facilities physically located.

